

International Conference

“Regional Economic Cooperation in Central Asia: Agricultural Production and Trade”

Leibniz Institute of Agricultural Development in Transition Economies , Halle/S., November 24-26, 2014



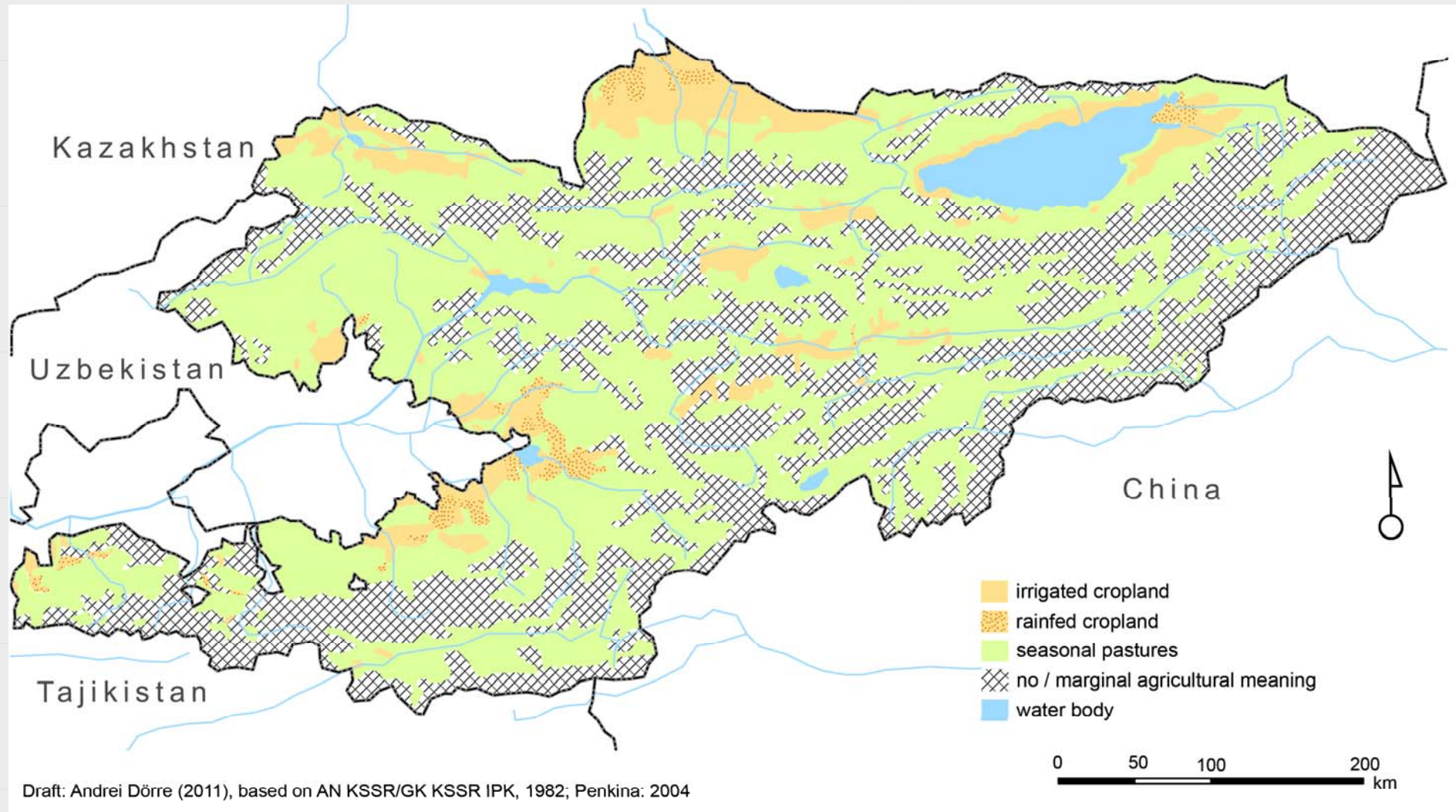
Pasture-related Legislation and Socio-ecological Challenges in Kyrgyzstan

Andrei Dörre

Freie Universität Berlin – Centre for Development Studies (ZELF)

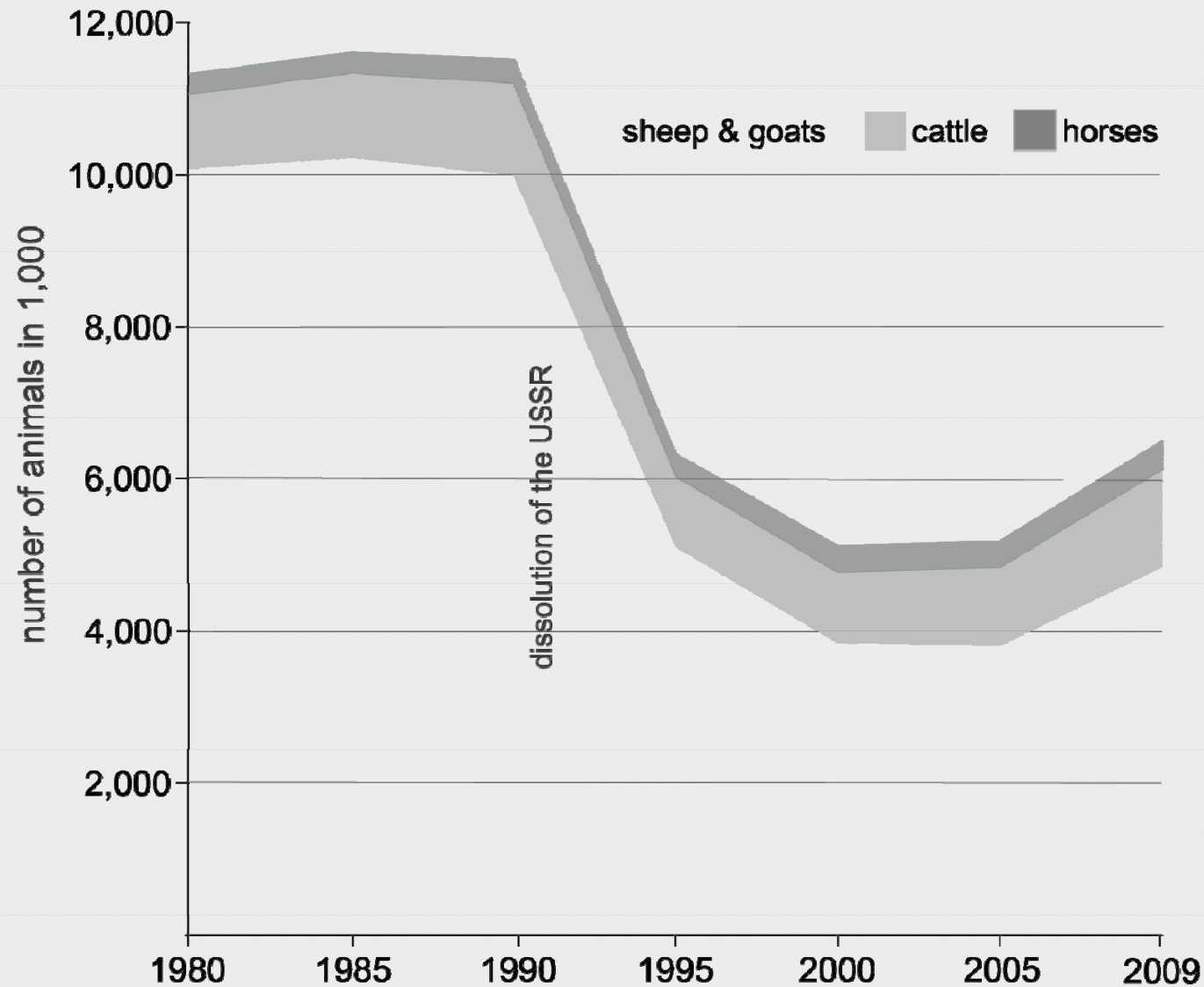
1 Problem Statement

Agricultural lands in Kyrgyzstan



1 Problem Statement

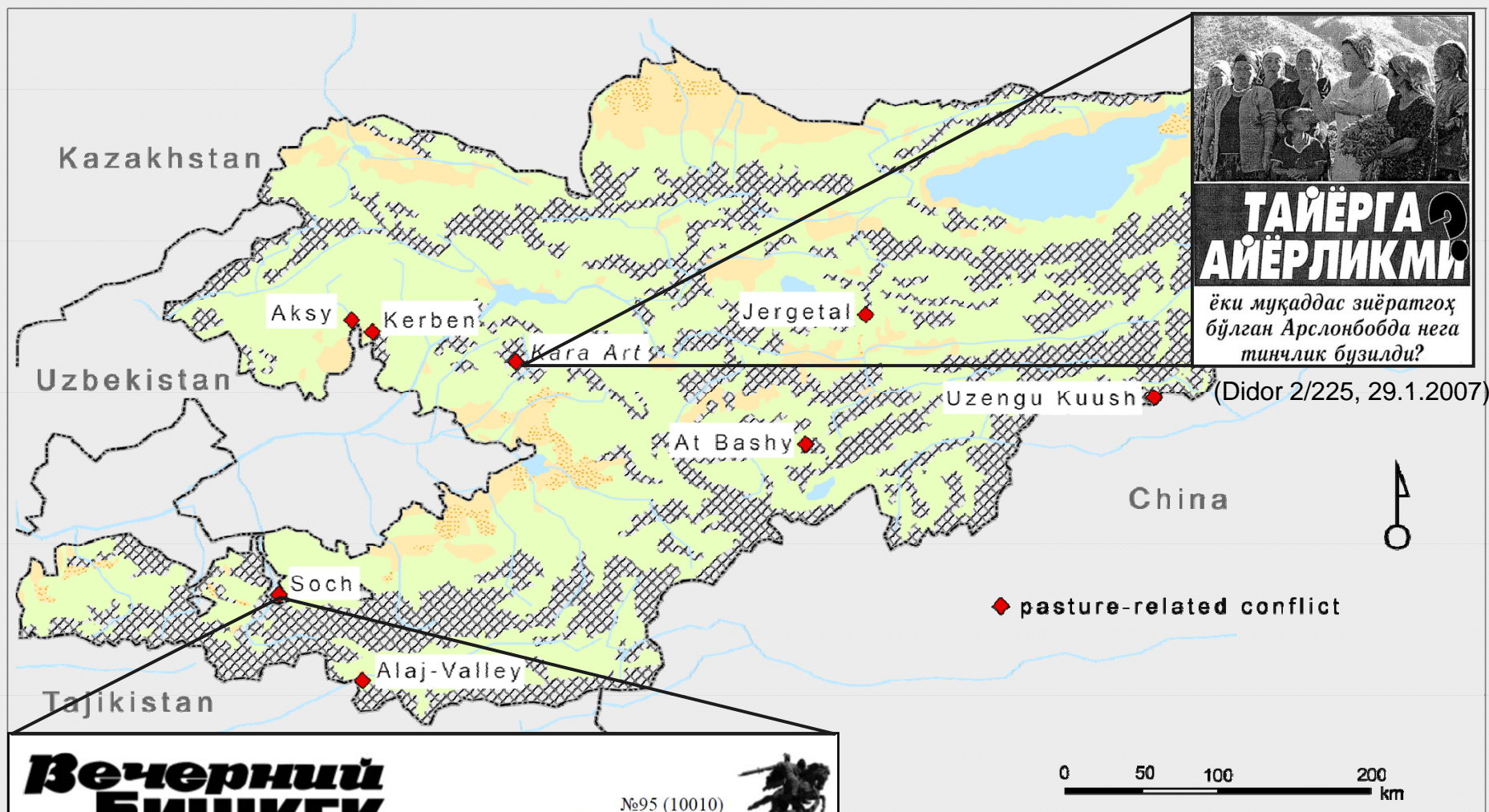
Dynamics of the livestock numbers



Draft based on Dörre & Borchardt 2012

1 Problem Statement

Pasture-related social conflicts



Вечерний Бишкек

№95 (10010)
Вторник, 1 июня 2010 года

погрансостояние
Ох этот Сох!
Уже несколько дней сохраняется напряженная ситуация на границе кыргызстанского села Согмент в Баткенской области и узбекистанского Хушъяр. Каждый день по обе стороны собираются по несколько сот человек, и пока чудом удается избежать серьезного инцидента.

(Kenzhezariiev 2010)

1 Problem Statement

Ecological problems

pasture category	Share of degraded pasture areas in %	
	1985	2002
winter pastures	12	16
spring- and autumn pastures	16	26
summer pastures	35	29
all pastures	24	25

Sources: SAEPF GKR & UNDPKR, 2007; Shamsiev et al., 2007

2 Research Question and Methodological Approach

Competing utilization practices



Ecological damages



Pictures: Andrei Dörre (2007)

Root causes of the challenges

interest-driven
actors and
power asymmetries

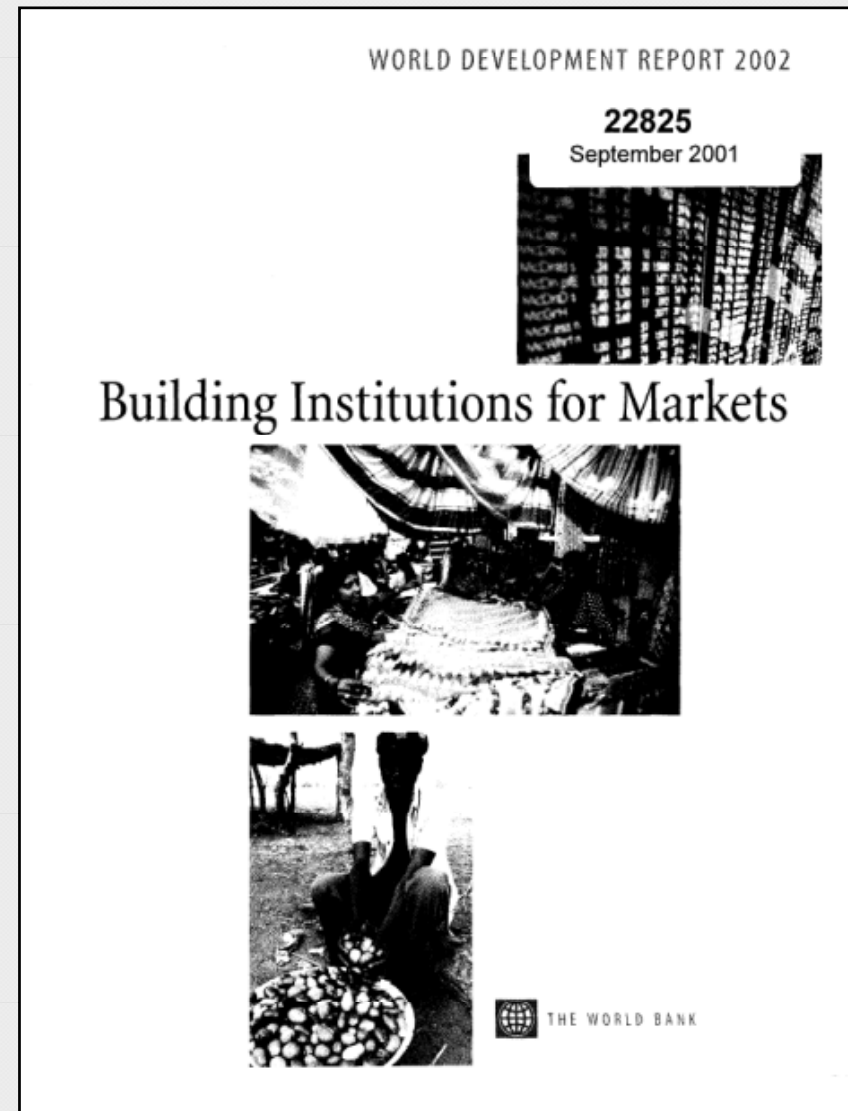
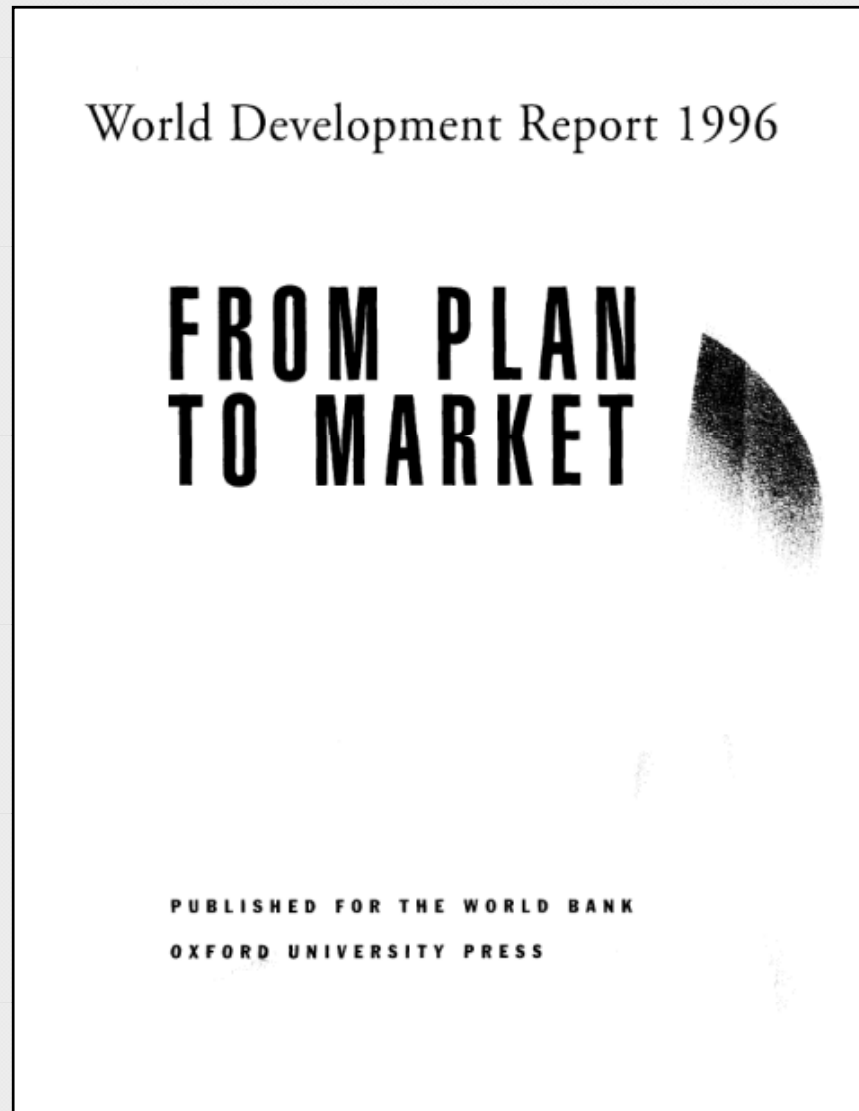
economic opportunities
and necessities

lack of planning
opportunities

structural
uncertainties

3 Results

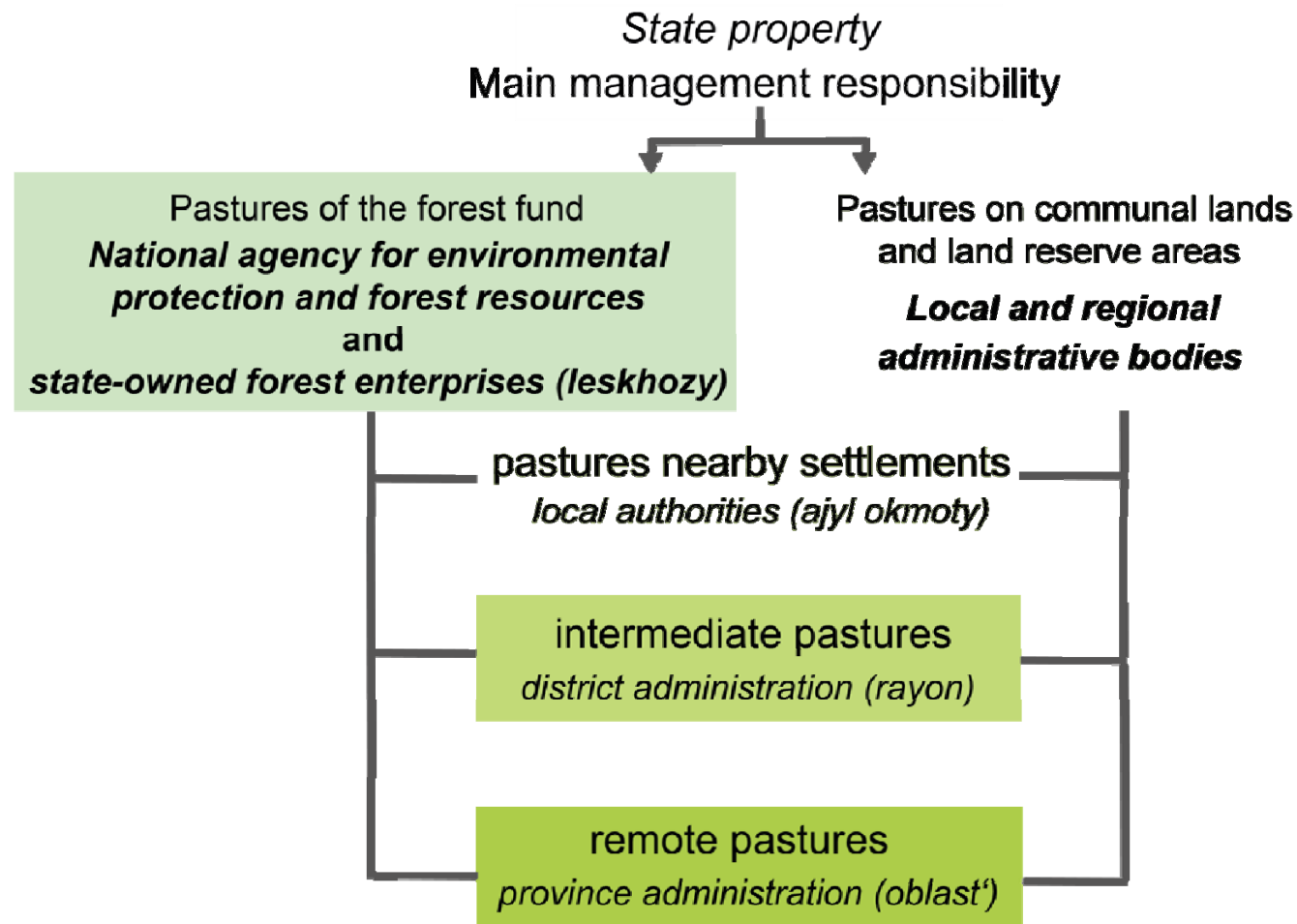
A Challenge on its own: Kyrgyzstan's Pasture Legislation



3 Results

A Challenge on its own: Kyrgyzstan's Pasture Legislation

Pastures in Kyrgyzstan **(Land Code & Regulations "On the procedure for providing pastures for lease and use")**



Draft: Andrei Dörre (2012)

3 Results

A Challenge on its own: Kyrgyzstan's Pasture Legislation

Pastures in Kyrgyzstan

(Law "On pastures")

State property

main management responsibility

not valid for

pastures of the forest fund

***National agency for environmental
protection and forest resources***

and

state-owned forest enterprises (leskhozy)



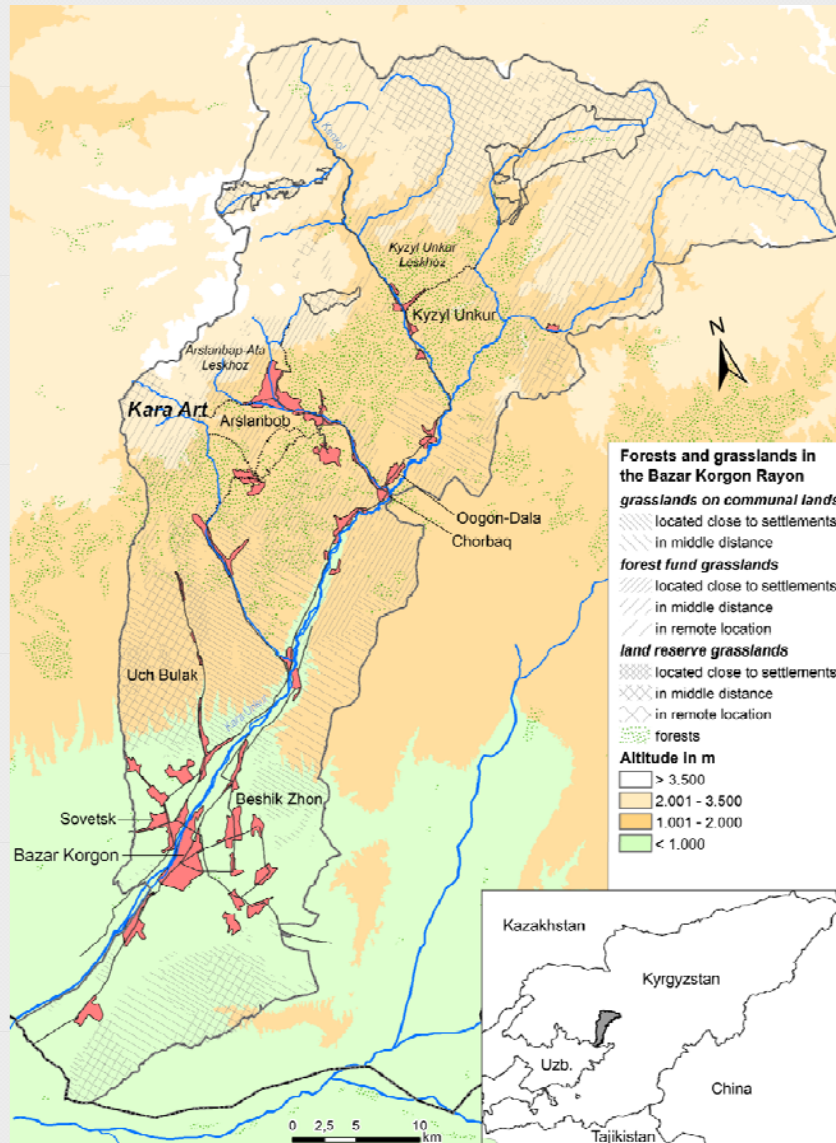
**Pastures on communal lands
and land reserve areas**

***local authorities
and committees***

Draft: Andrei Dörre (2012)

3 Results

An Example from the Walnut-Fruit Forest Region: The Kara Art Conflict



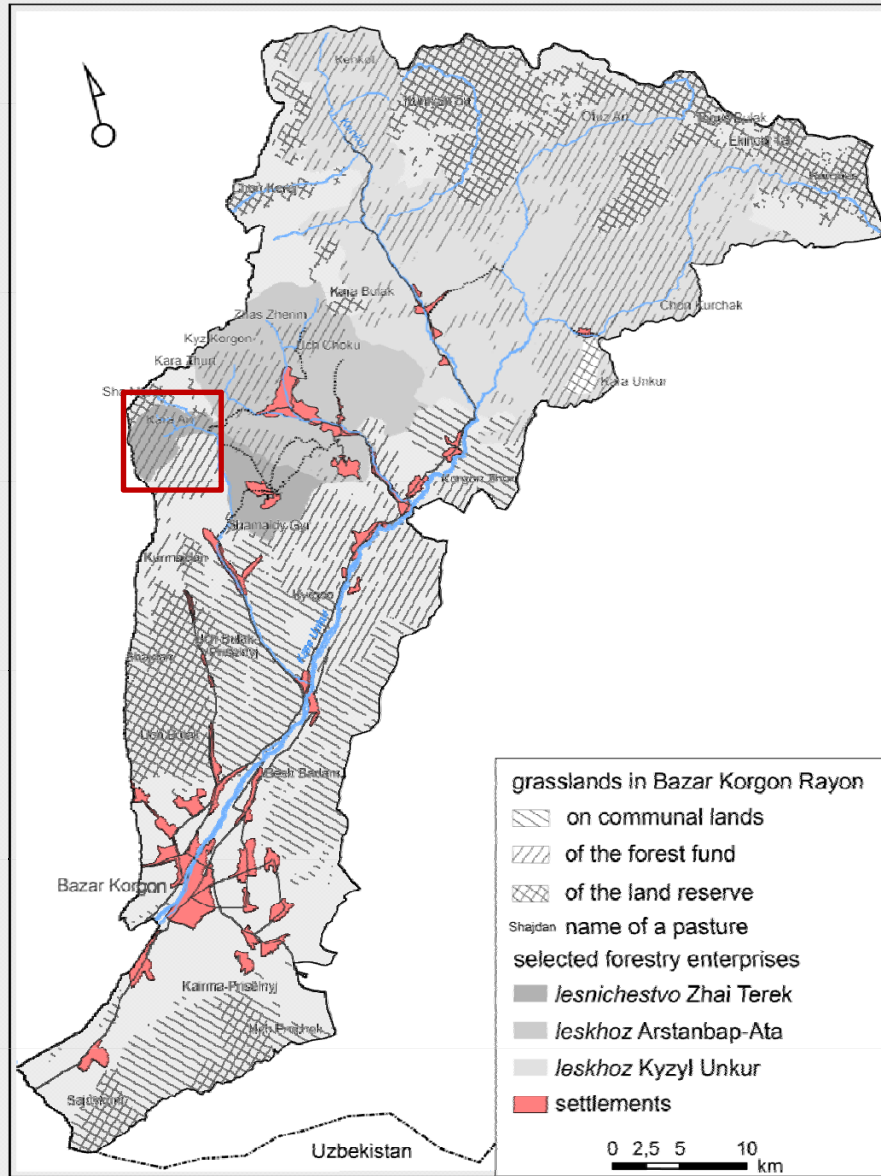
Draft based on Dörre (2012)



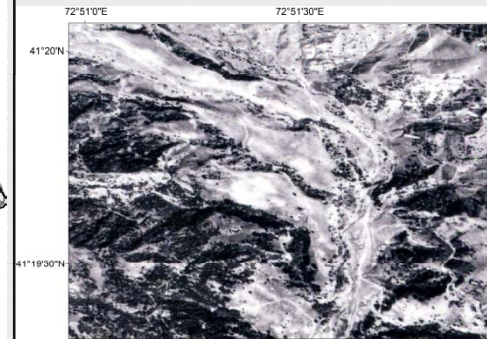
Pictures: Dörre (2007-2010)

3 Results

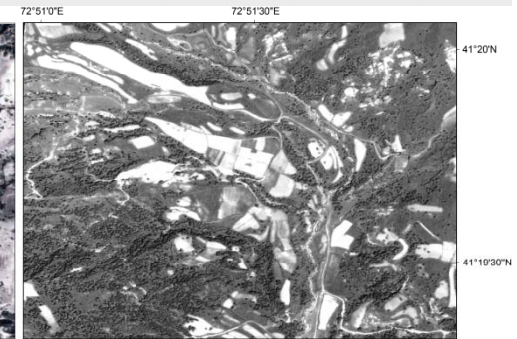
An Example from the Walnut-Fruit Forest Region: The Kara Art Conflict



Kara Art: Aerial image 1990



Kara Art: Satellite image 2007



500 m

Draft: Dörre (2014)

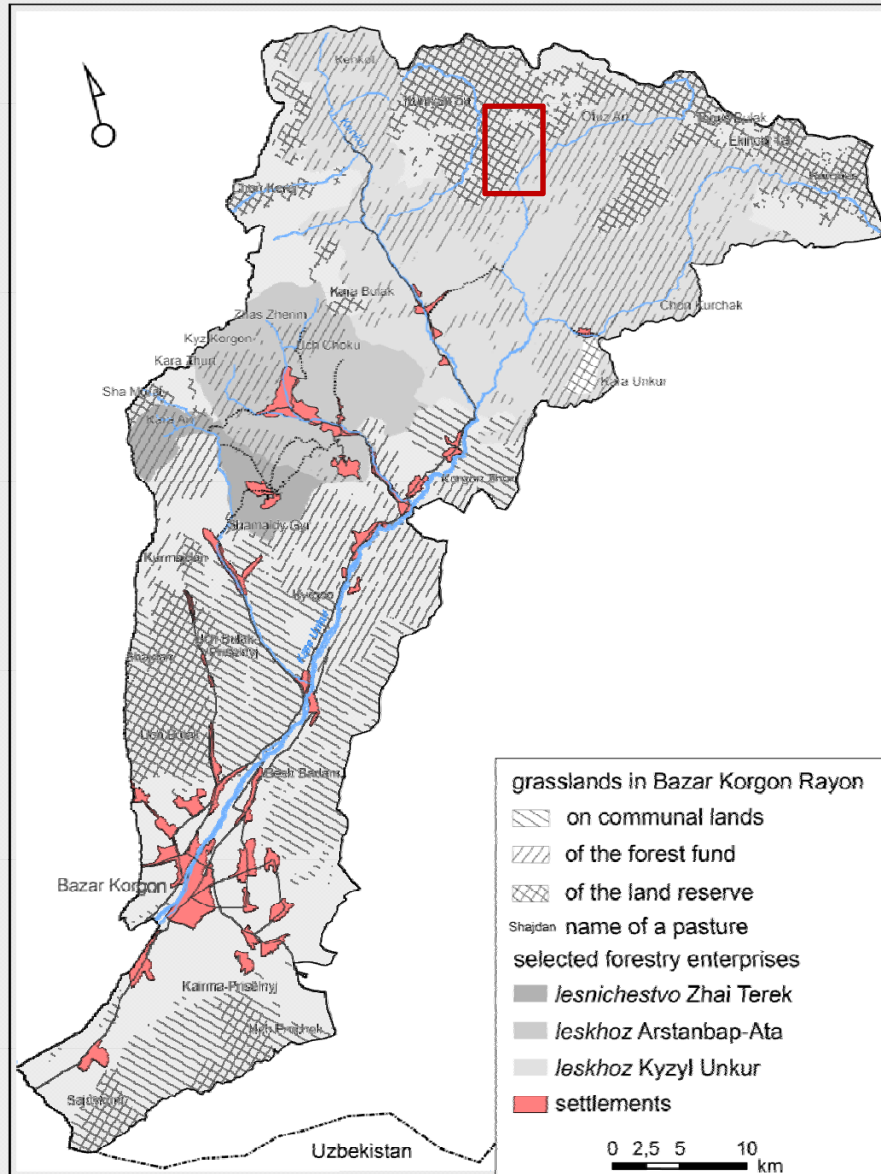


Pictures: Dörre (2007-2010)

Draft based on Dörre (2014)

3 Results

Another example from the Walnut-Fruit Forest Region: The Otuz Art Pasture



Draft based on Dörre (2014)

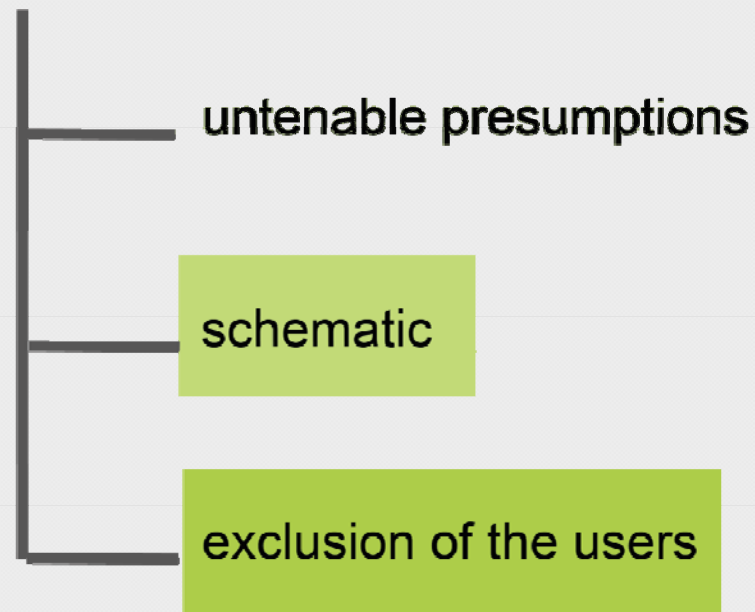


Pictures: Dörre (2007)

4 Discussion of Results

Reasons for the failure of the pasture legislation

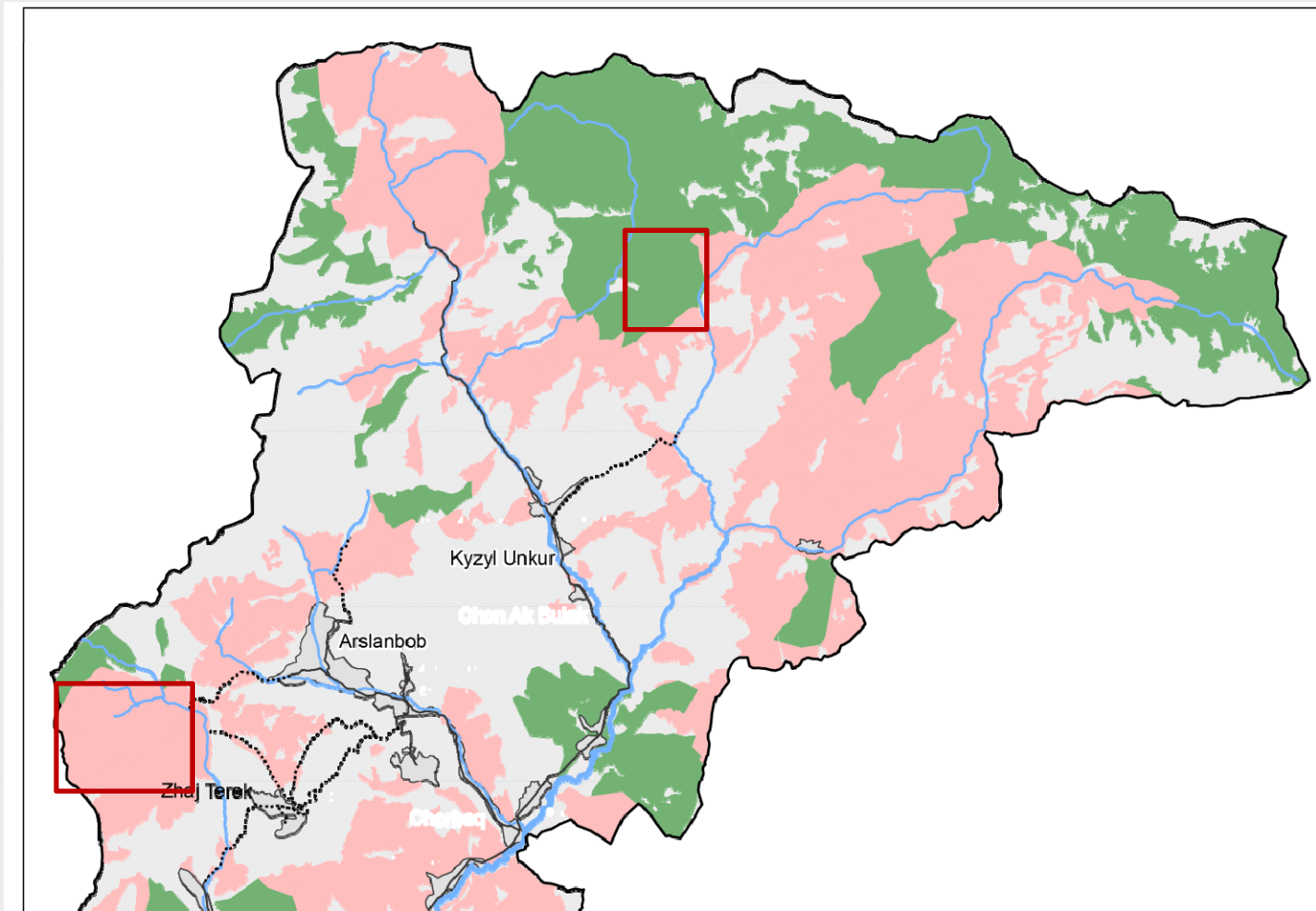
Reasons for the failure of the pasture legislation



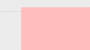
Draft: Andrei Dörre (2013)

4 Discussion of Results

Applicability of the new pasture law



 new pasture law is applicable

 new pasture law is not applicable

Draft based on Dörre (2014)

4 Discussion of Results



References

- AN KSSR Akademiya Nauk Kirgizskoi Sovetskoi Socialisticheskoi Respubliki, GK KSSR IPK Gosudarstvennyi Komitet Kirgizskoi Sovetskoi Socialisticheskoi Respubliki po delam izdatel'stv, poligrafii i knizhnoi trgovli (1982): Kirgizskaya Sovetskaya Socialisticheskaya Respublika. Encyklopediya. Frunze. Glavnaya Redakciya Kirgizskoi Sovetskoi Enciklopedii
- Dörre A. (2014): Naturressourcennutzung im Kontext struktureller Unsicherheiten. Eine Politische Ökologie der Weideländer Kirgisistans in Zeiten gesellschaftlicher Umbrüche (= Erdkundliches Wissen. Schriftenreihe für Forschung und Praxis 154). Stuttgart. Franz Steiner Verlag
- (2012): Legal Arrangements and Pasture-related Socio-ecological Challenges in Kyrgyzstan. In: Kreutzmann, H. (ed.): Pastoral Practices in High Asia. Agency of 'development' effected by modernisation, resettlement and transformation (Springer series "Advances in Asian Human-Environmental Research"). Heidelberg. Springer. 127–144
- Dörre A., Borchardt P. (2012): Changing systems, changing effects: Pasture utilization in the course of the post-Soviet transition. Case studies from southwestern Kyrgyzstan. In: Mountain Research and Development 32 (3). 313–323
- IBRD International Bank for Reconstruction and Development (2002): Building institutions for (World Development Report 2002, Report 22825). New York. Oxford University Press
- (1996): From Plan to Market (World Development Report 1996, Report 15892). New York. Oxford University Press
- Kenzhesariyev U. (2010): Okh etot Sokh! In: Vechernii Bishkek (1.6.2010)
- KIRGIZGIPROZEM Kirgizskii Gosudarstvennyi Proektnyj Institut po Zemleustroistvu Kirgizskoi Sovetskoi Socialisticheskoi Respubliki (1983a): Karta Bazar-Kurganskogo Raiona Oshskoi oblasti Kirgizskoi SSR. Scale 1:50,000
- (1983b): Kormovo-Botanicheskaya Karta. Gosudarstvennoe Kolkhoznoe Ob"edinenie Zhivprom. Scale 1:50,000
- Mamaraimov A. (2007): Tayorga Ayor Likmi? In: Didor 2 (225, 29.1.2007). 1, 4
- Penkina L. (2004): Estestvennye pastbishha i etnokulturnye tradicii. Bishkek
- SAEPFUGKR State Agency on Environment Protection and Forestry under the Government of the Kyrgyz Republic, UNDPKR United Nations Development Programme in the Kyrgyz Republic (2007): Kyrgyzstan. Environment and Natural Resources for Sustainable Development. Bishkek. UNDP
- Shamsiev B., Katsu S., Dixon A., Voegele J. (2007): Kyrgyz Republic. Livestock Sector Review: Embracing the New Challenges (World Bank Report 39026). Washington, D.C. The World Bank