

Ukraine oilseed and grain markets till 2030

Paper presented at the IAMO Forum 2017

Verena Wolf, Martin Banse

Thünen-Institut für Marktanalyse



Halle (Saale),
21.06.2017

Content

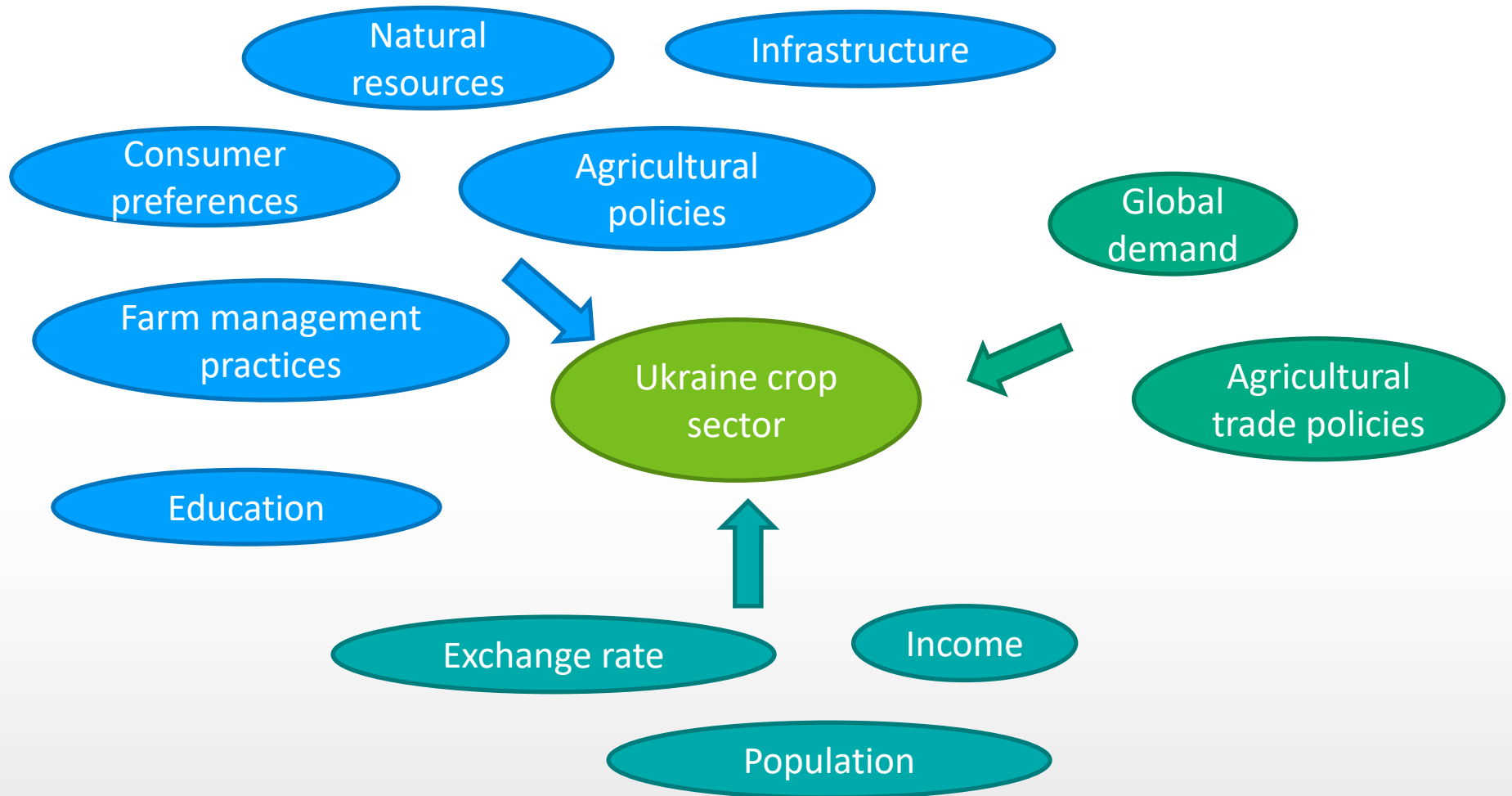
- Motivation
- Method
- Results
- Conclusion

Motivation: Focus on Ukraine

What can Ukraine contribute to the supply of agricultural crops in the future?

- Important impacts on world agricultural market, especially grains and oilseeds
- Still significant agriculture production potentials
- Changing political-economic framework

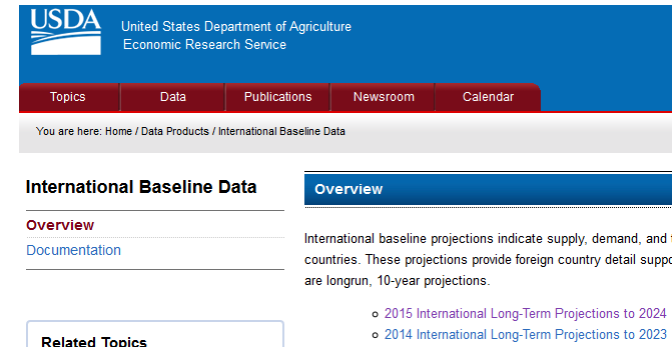
Influences on the Ukrainian crop sector



Projections for global or regional agricultural developments

Agriculture market projection

- Partial equilibrium models
 - AGLINK-COSIMO
 - USDA model
 - AGMEMOD
- General overview
- Specific focuses



USDA United States Department of Agriculture
Economic Research Service

Topics Data Publications Newsroom Calendar

You are here: Home / Data Products / International Baseline Data

International Baseline Data

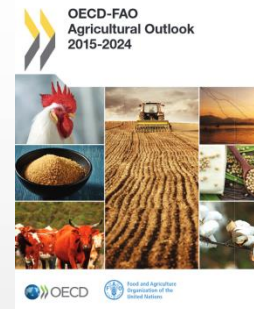
Overview

[Documentation](#)

International baseline projections indicate supply, demand, and trade for countries. These projections provide foreign country detail support for longrun, 10-year projections.

- [2015 International Long-Term Projections to 2024](#)
- [2014 International Long-Term Projections to 2023](#)

Related Topics



Method for projections for Ukraine

Partial equilibrium model

- Detailed and updated market representation
- Long time series
- Annual projections



Missing relevant factors for Ukraine

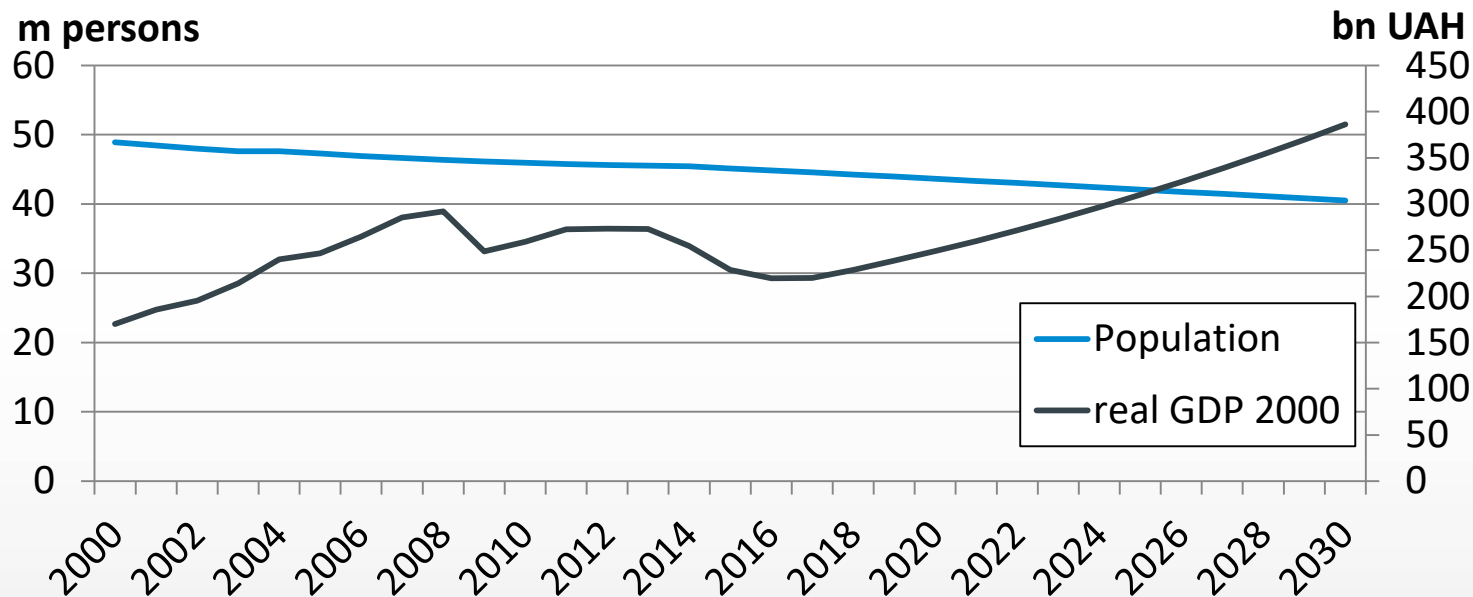
- Land use and yield potential based on bio-physical properties
- Bilateral trade and trade policies
- Interaction with other economic sectors



Incorporating information from models in AGMEMOD

Model linkage – mapping and harmonization

- Mapping: Regions, sectors, variables, periods, units
- Harmonization: population and gross domestic product



Historical and assumed developments of real 2000 GDP in bn UAH and population in m persons for Ukraine in the models

Linkage – data exchange



Imports
and
exports

Yield and available
area for agriculture

Yield



Linkage – data exchange

Yield

- In AGMEMOD: first projection year is 3-year average of historical yields
- Afterwards annual percentage changes based on the GLOBIOM 10-year projections

Area

- Absolute annual changes in forest, grassland and other land from GLOBIOM implemented in AGMEMOD => land conversion to/ from cropland

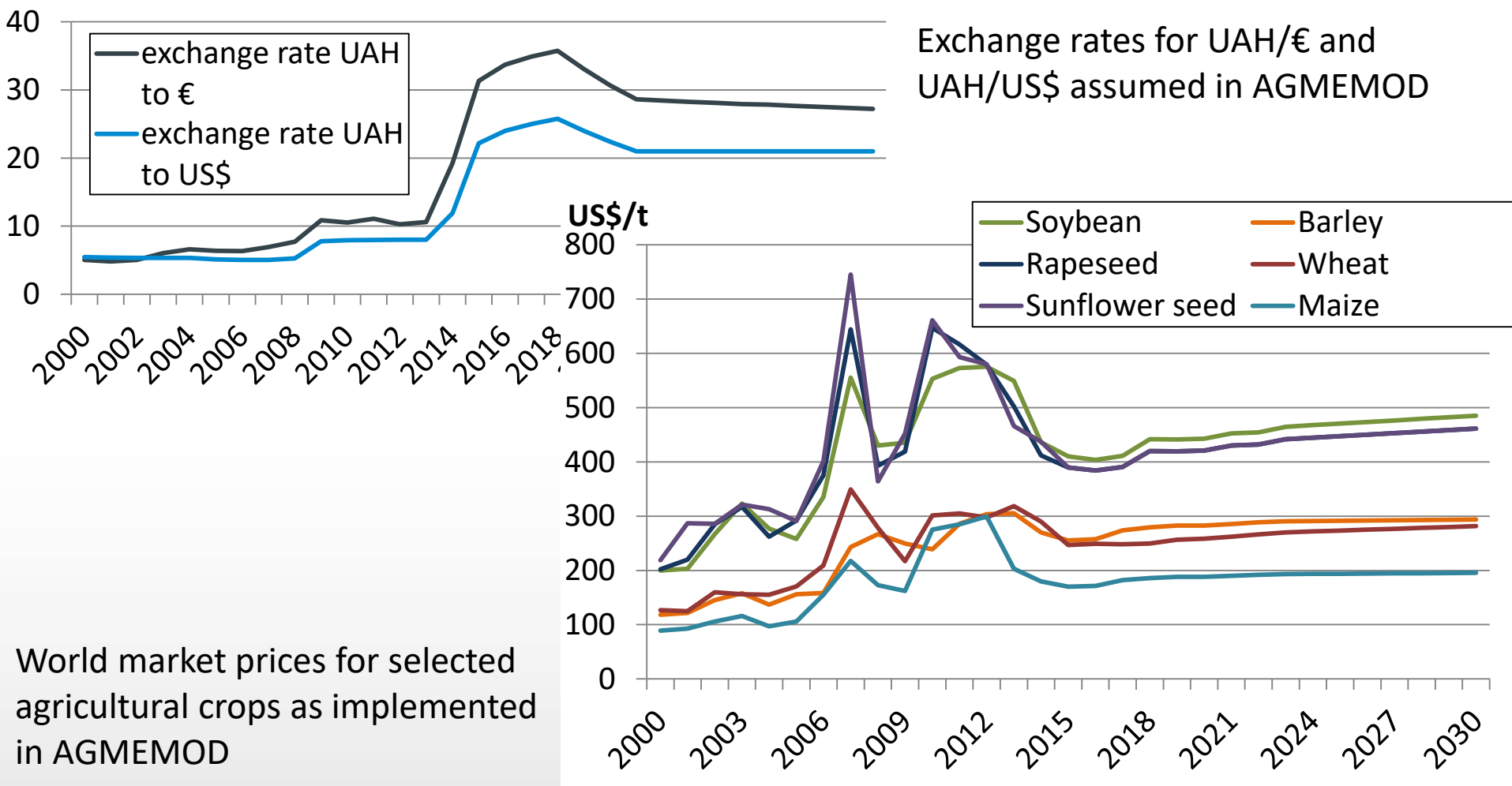
Trade

- Annual percentage changes of export and import volume from MAGNET

Outlook scenario

- **Moderate economic development and technical progress**
- **Negotiated trade agreements (in MAGNET)**
 - DCFTAs of EU with Ukraine, Georgia and Moldova
 - Eurasian Economic Union between Russia, Armenia, Belarus, Kazakhstan, Kyrgyzstan

Outlook scenario – additional exogenous assumptions

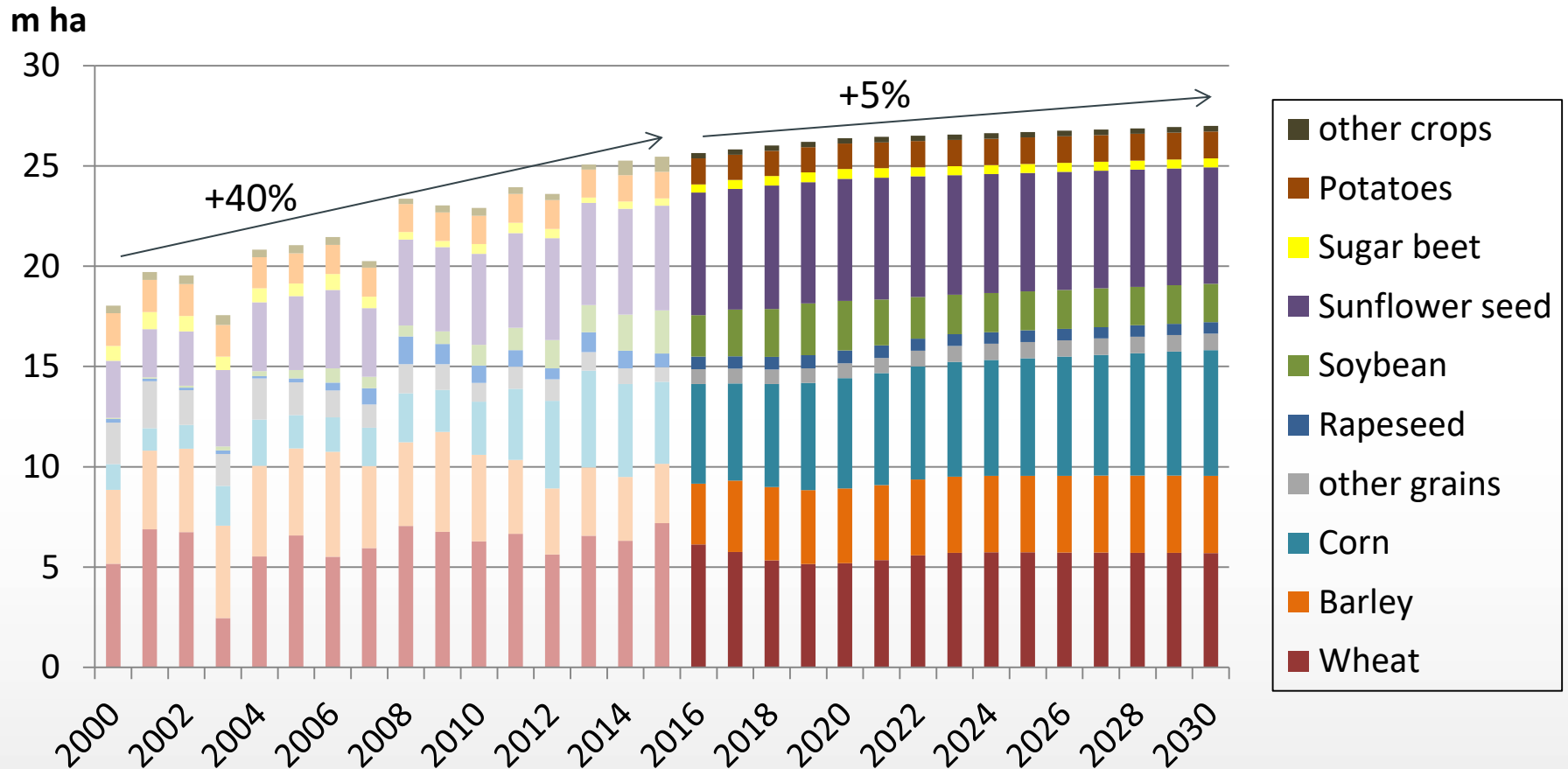


Results

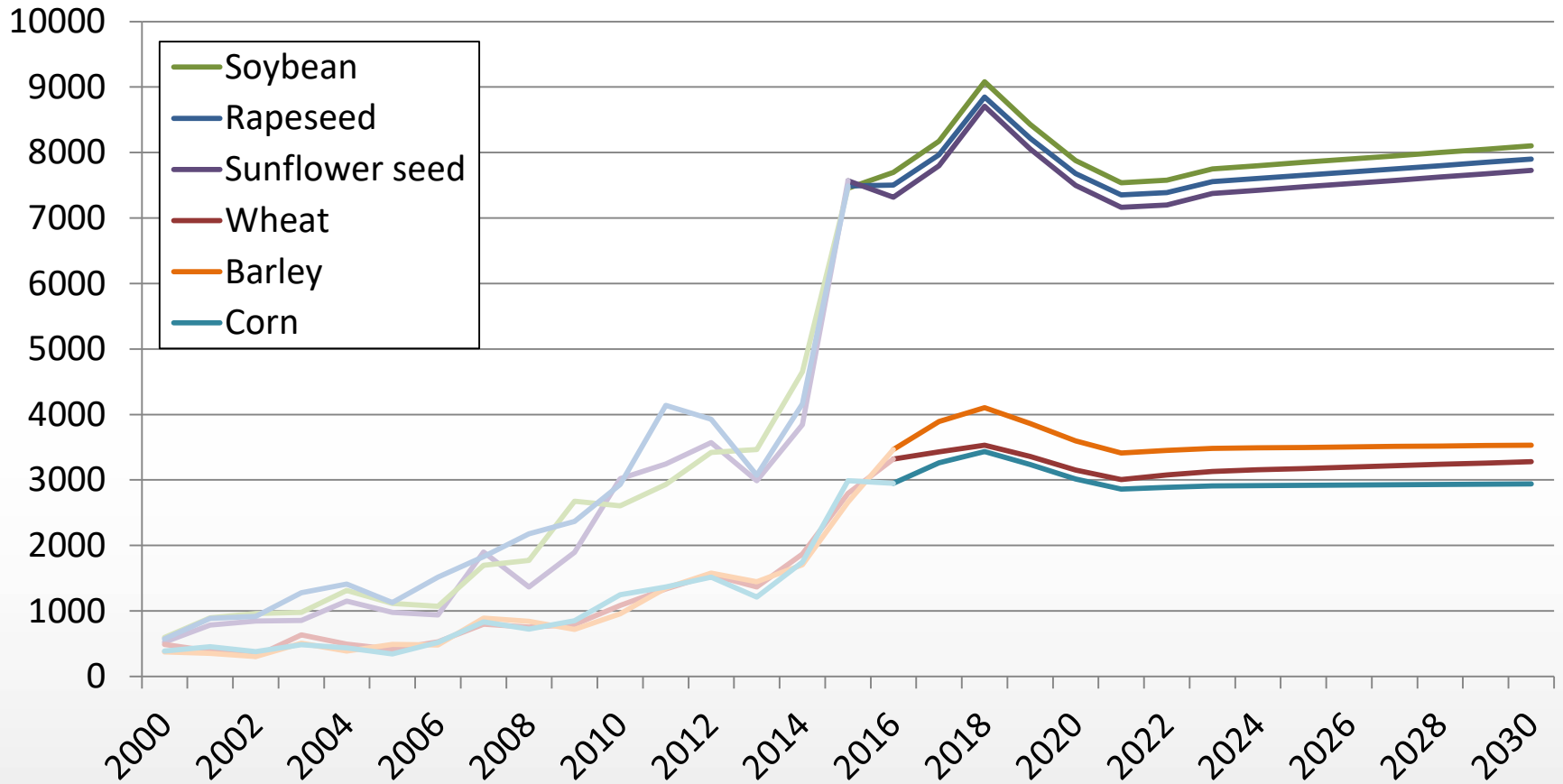
- Historical data till 2013 or 2015
- Average weather conditions
- Assumptions dependent
- Volatility not captured

⇒ **Not a forecast!**

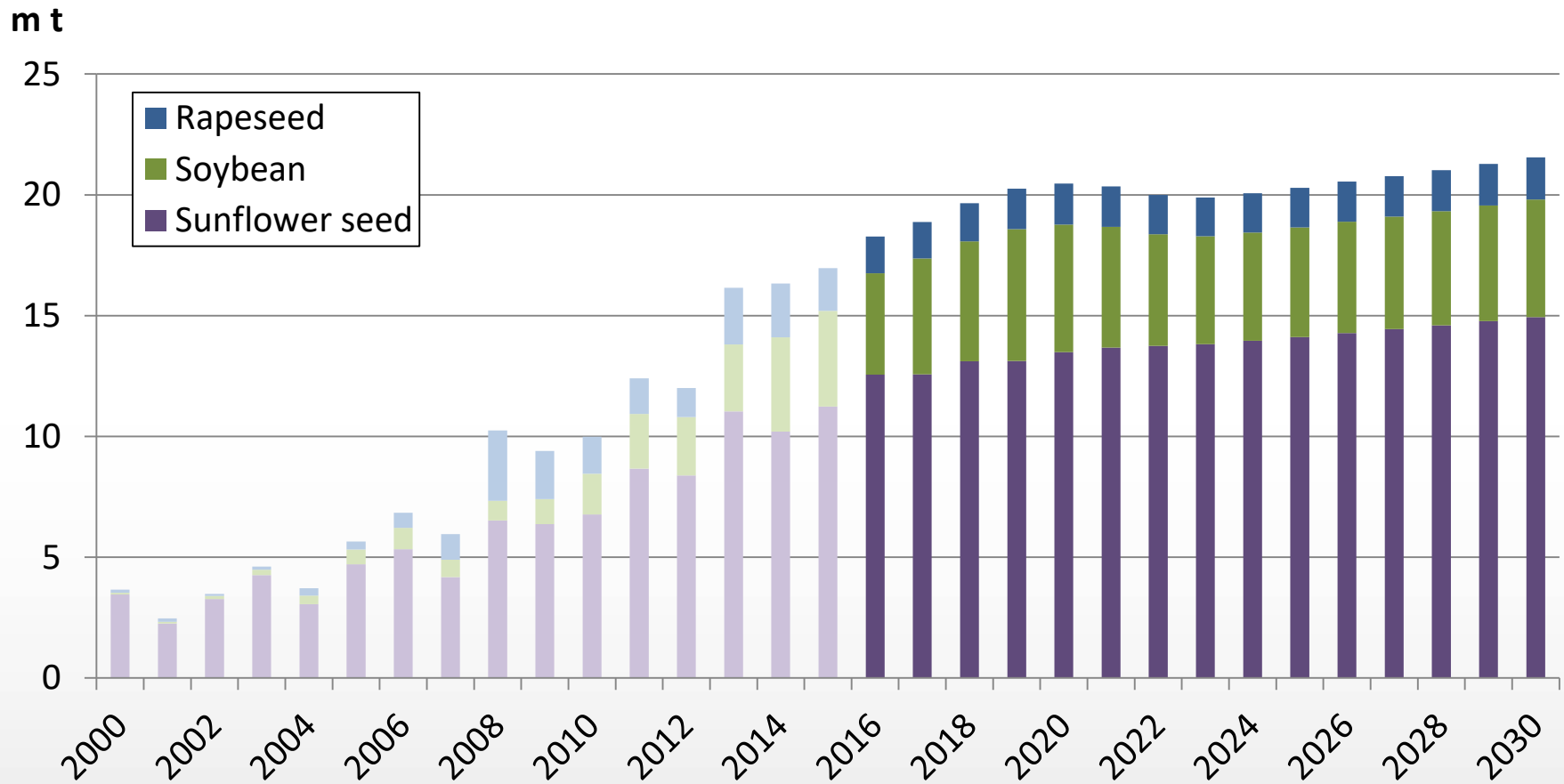
Crop area



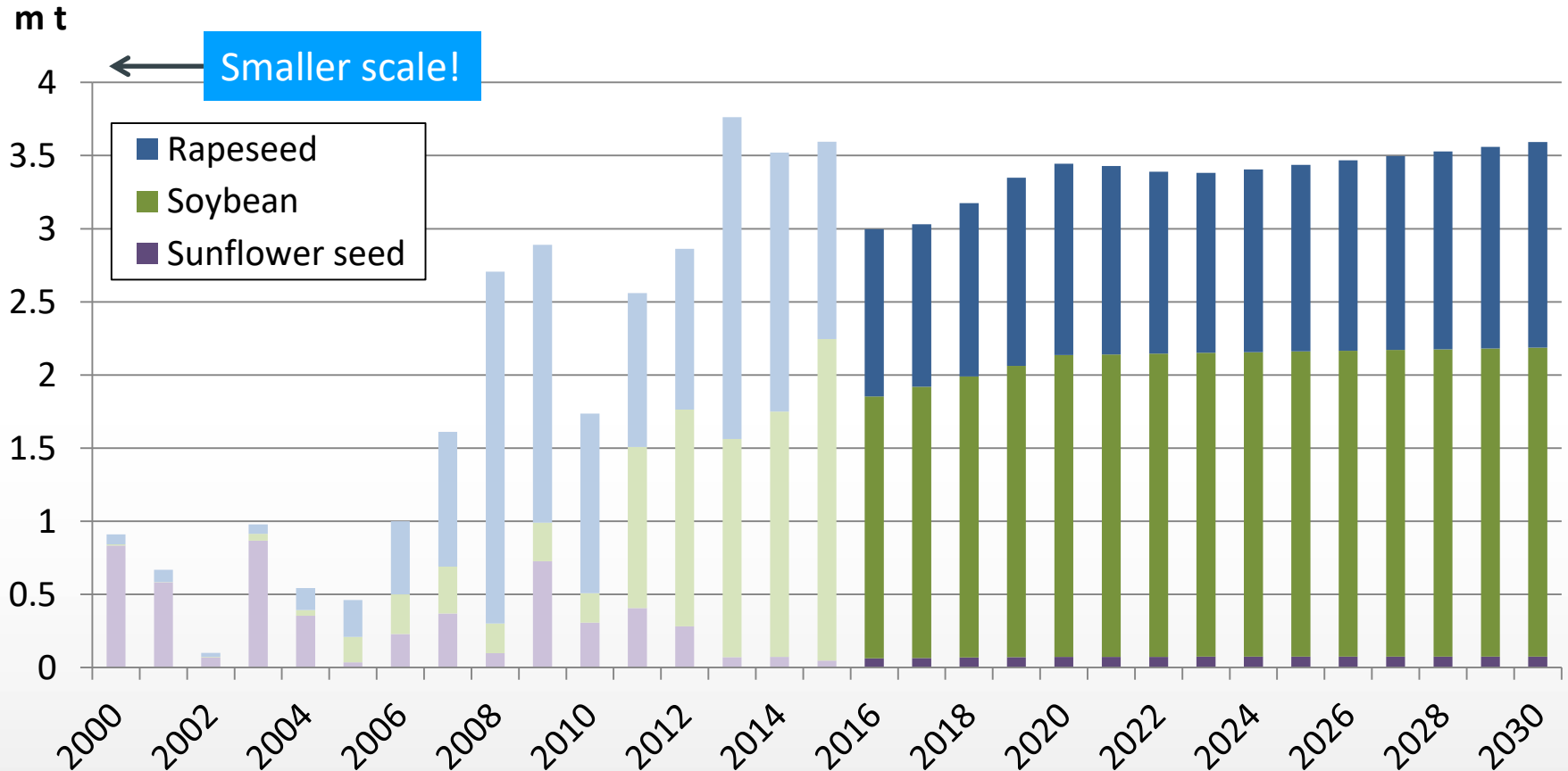
Producer prices in nominal UAH



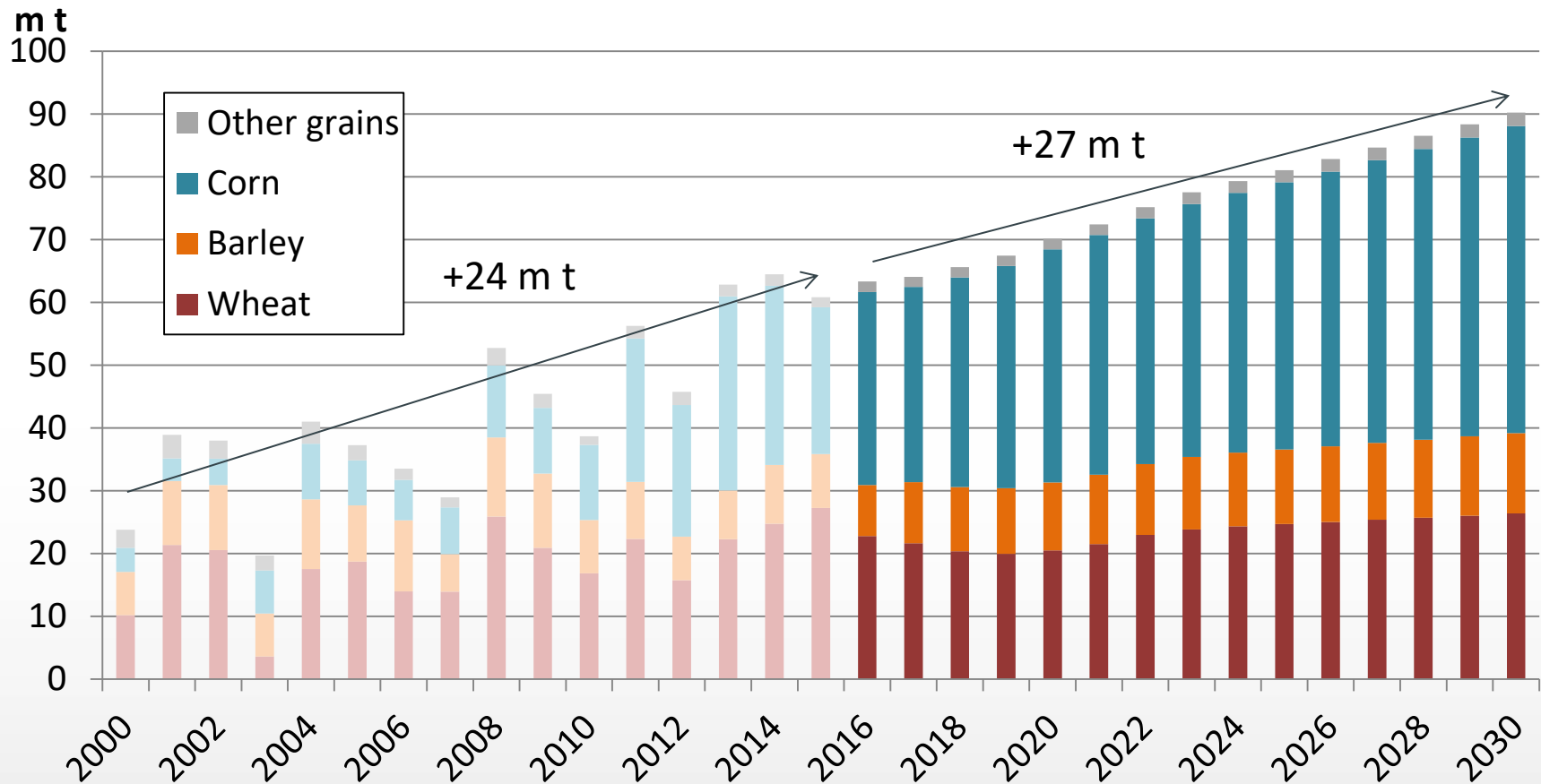
Oilseed production



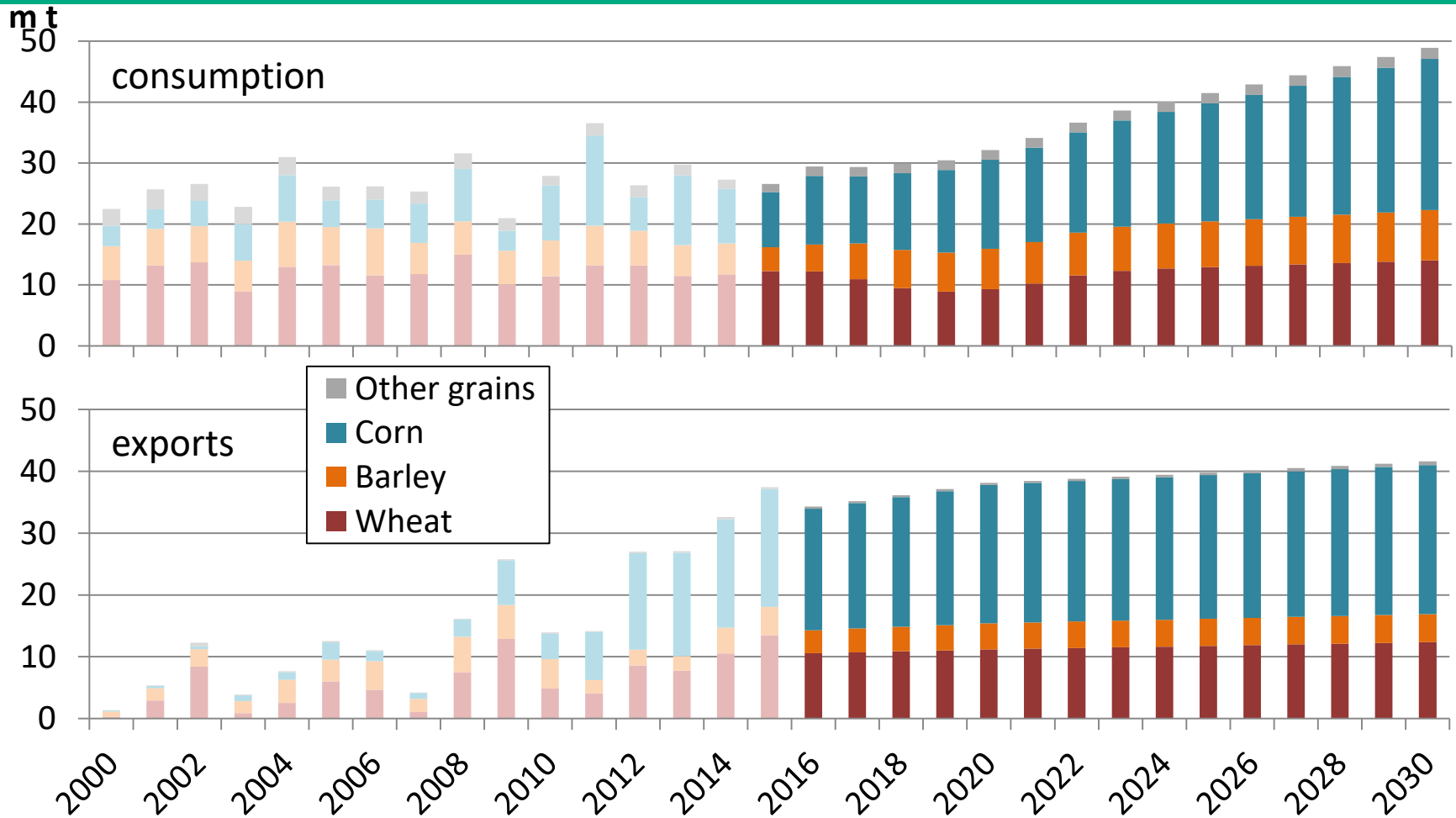
Oilseed exports



Grain production



Grain consumption and exports



Comparison across studies: example corn and wheat

		Corn			Growth rate	Wheat			Growth rate
		2015	2020	2025	2015-2025	2015	2020	2025	2015-2025
Production	OECD	22.0	26.8	28.7	31%	26.4	25.8	29.3	11%
	USDA	23.0	28.7	33.2	44%	27.0	25.1	26.1	-3%
	AGMEMOD	23.4	37.1	42.6	82%	27.3	20.5	24.7	-9%
Net Exports	OECD	15.9	17.8	19.1	20%	14.5	12.7	15.6	8%
	USDA	15.0	16.2	18.7	25%	15.0	12.1	12.8	-14%
	AGMEMOD	19.0	22.3	23.2	22%	13.5	11.2	11.8	-13%
Consumption	OECD	8.5	9.0	9.6	13%	12.4	13.0	13.6	10%
	USDA	8.4	12.5	14.4	72%	12.5	13.0	13.2	6%
	AGMEMOD	9.1	14.6	19.4	114%	12.3	9.3	12.9	6%

Conclusion

- **Continued production growth for grains**
- **Slow down of oilseed production growth**
- **Large exporter of grain and oilseeds**
 - ⇒ strong dependency on world market
- **Projections**
 - Based on specific assumptions
 - Improved modeling framework
 - Comparable to other outlooks
- **Next step: scenario analysis**

Thank you for your attention!

verena.wolf@thuenen.de

www.thuenen.de

Thünen Institute for Market Analysis

